



http://app.pan.pl/SOM/app61-Kerber_etal_SOM.pdf

SUPPLEMENTARY ONLINE MATERIAL FOR

Leonardo Kerber, Francisco Ricardo Negri, Ana Maria Ribeiro, Maria Guiomar Vucetich, and Jonas Pereira de Souza-Filho

Late Miocene potamarchine rodents from southwestern Amazonia, Brazil—with description of new taxa

Published in *Acta Palaeontologica Polonica* 2016 61 (1): 191–203.
<http://dx.doi.org/10.4202/app.00091.2014>

Supplementary Online Material

SOM 1. Figures

Figure S1. Tridimensional reconstruction of the palate of *Potamarchus adamaiae* sp. nov. in several views.

Figure S2. Cantagalo outcrop, Juruá river, where the holotype of *Potamarchus adamaiae* nov. sp. was collected.

Figure S3. Isolated Cheek teeth (occlusal view) of *Potamarchus* sp. from the Solimões Formation. A. UFAC 2785, left P4; B. UFAC 5426, right M2; C. UFAC 3365, left M3; D. UFAC 3249, right P4; E. UFAC 4508, right M3.

Figure S4. Tridimensional reconstruction of the maxilla of *Pseudopotamarchus villanuevai* gen. et sp. nov. in several views.

SOM 2. Animation of the tridimensional reconstruction of the palate and cheek teeth of *Potamarchus adamaiae* sp. nov.

http://app.pan.pl/SOM/app61-Kerber_etal_SOM/SOM_2.mp4

SOM 3. Animation of the tridimensional reconstruction of the maxilla and cheek teeth *Pseudopotamarchus villanuevai* gen. et sp. nov.

http://app.pan.pl/SOM/app61-Kerber_etal_SOM/SOM_3.mp4



Fig. S1. Tridimensional reconstruction of the palate of *Potamarchus adamae* sp. nov.



Fig. S1. Continued.



Fig. S1. Continued.

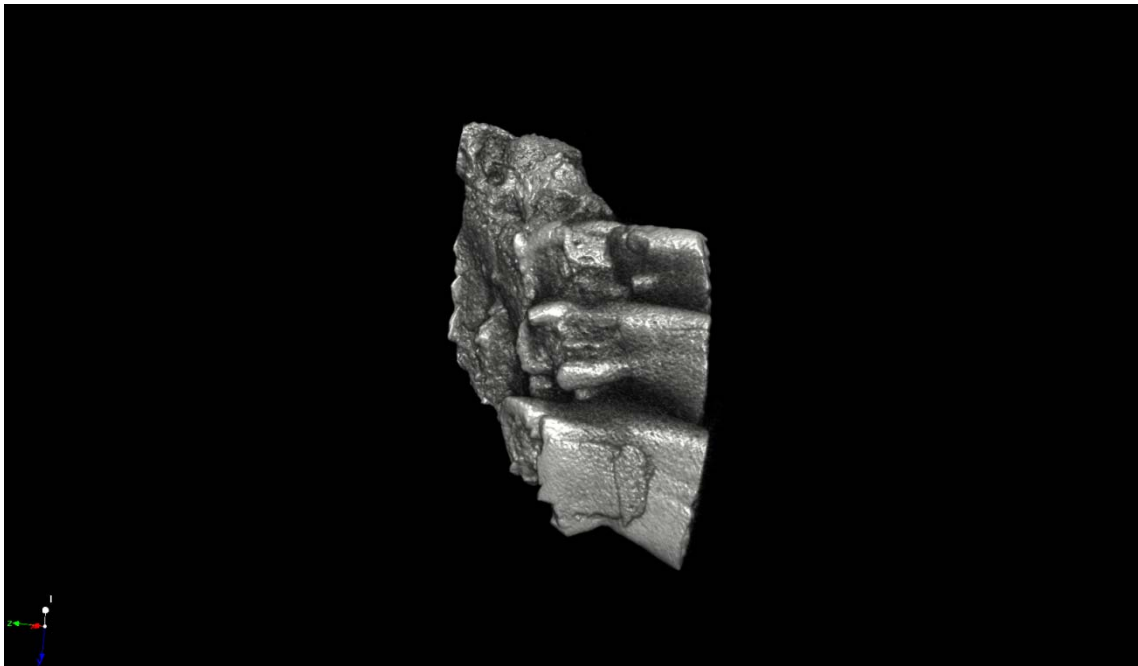


Fig. S1. Continued.

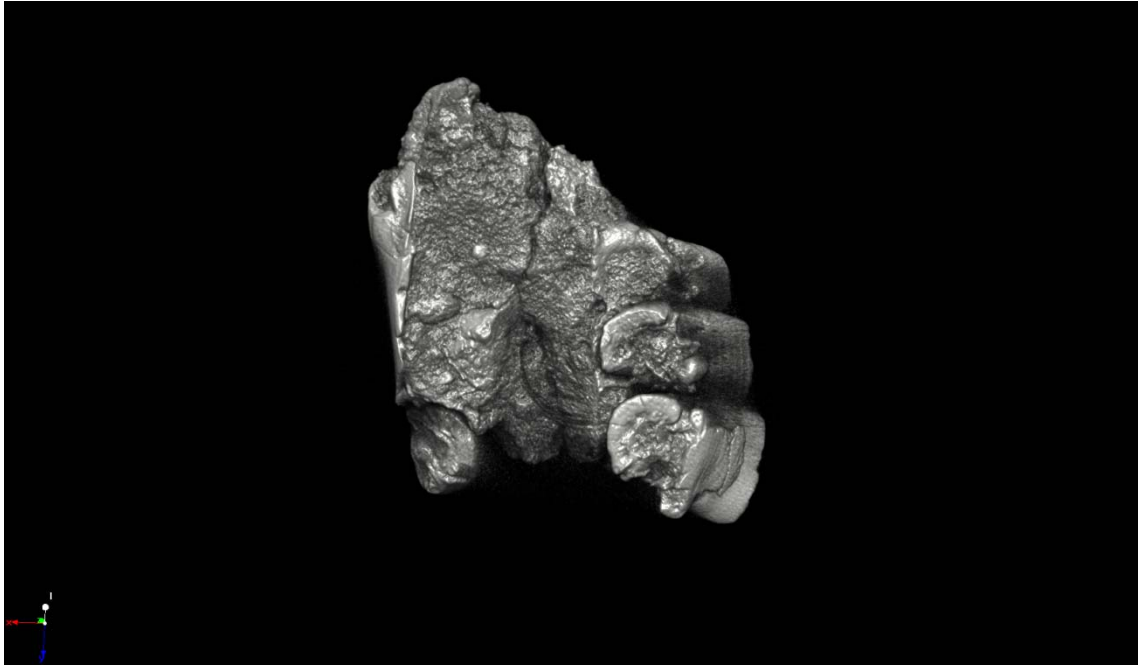


Fig. S1. Continued.

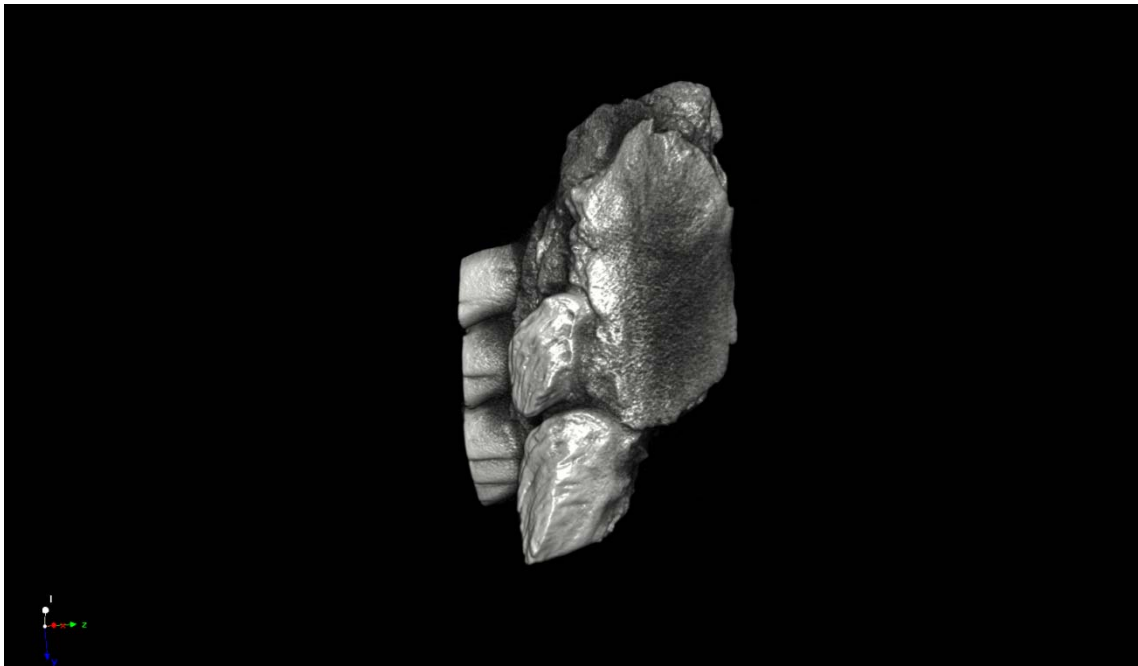


Fig. S1. Continued.

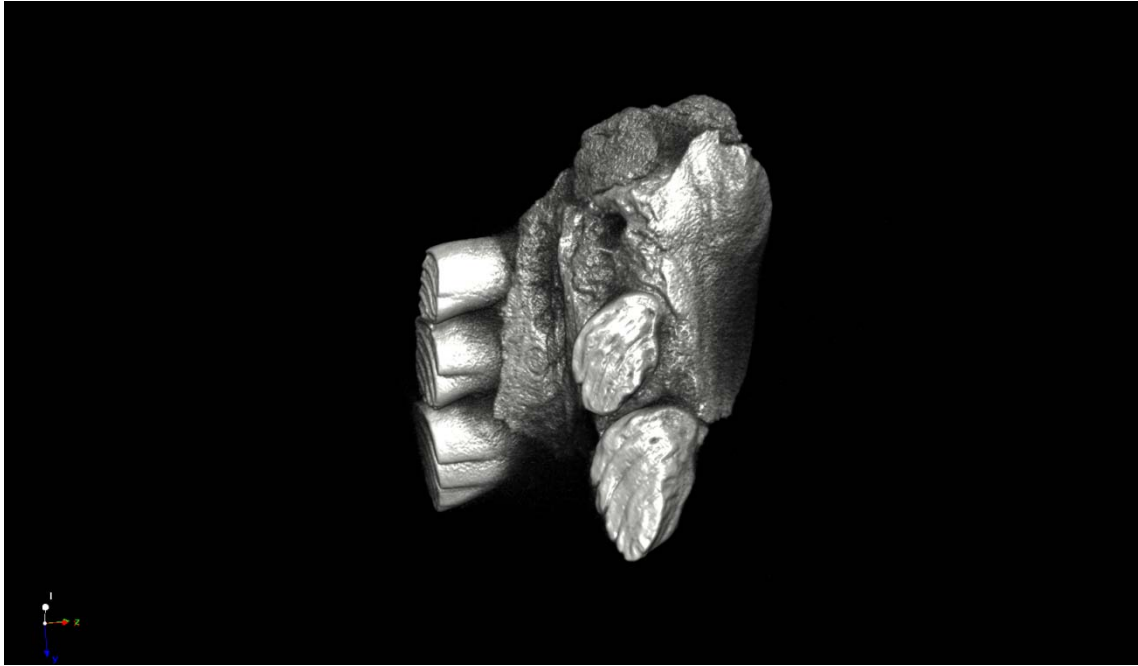


Fig. S1. Continued.

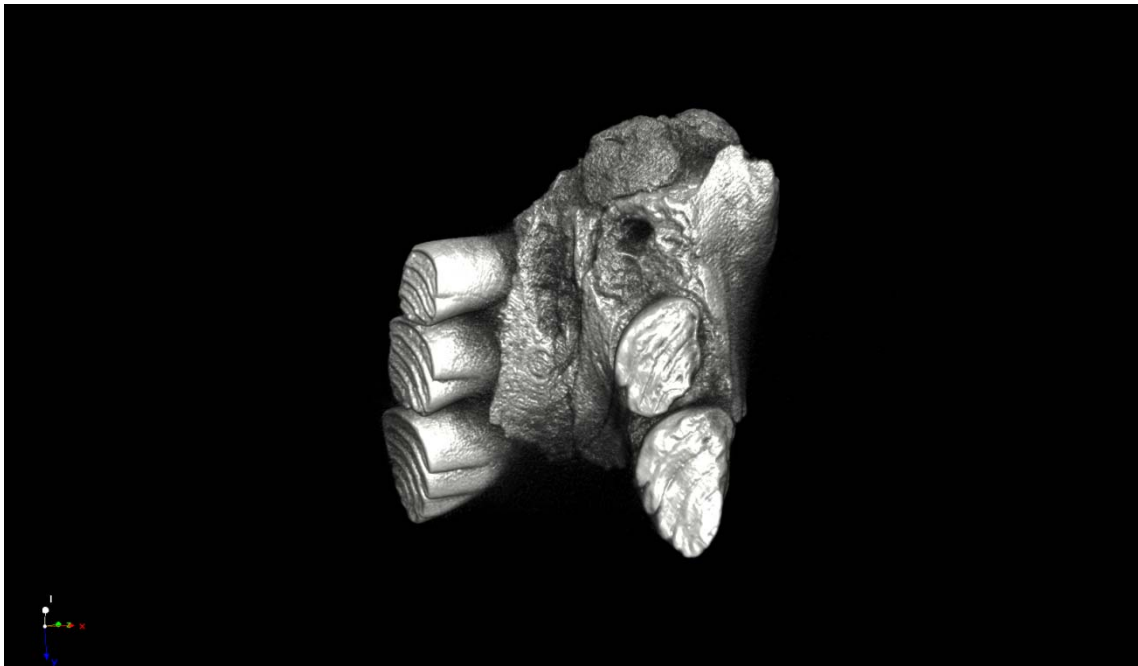


Fig. S1. Continued.

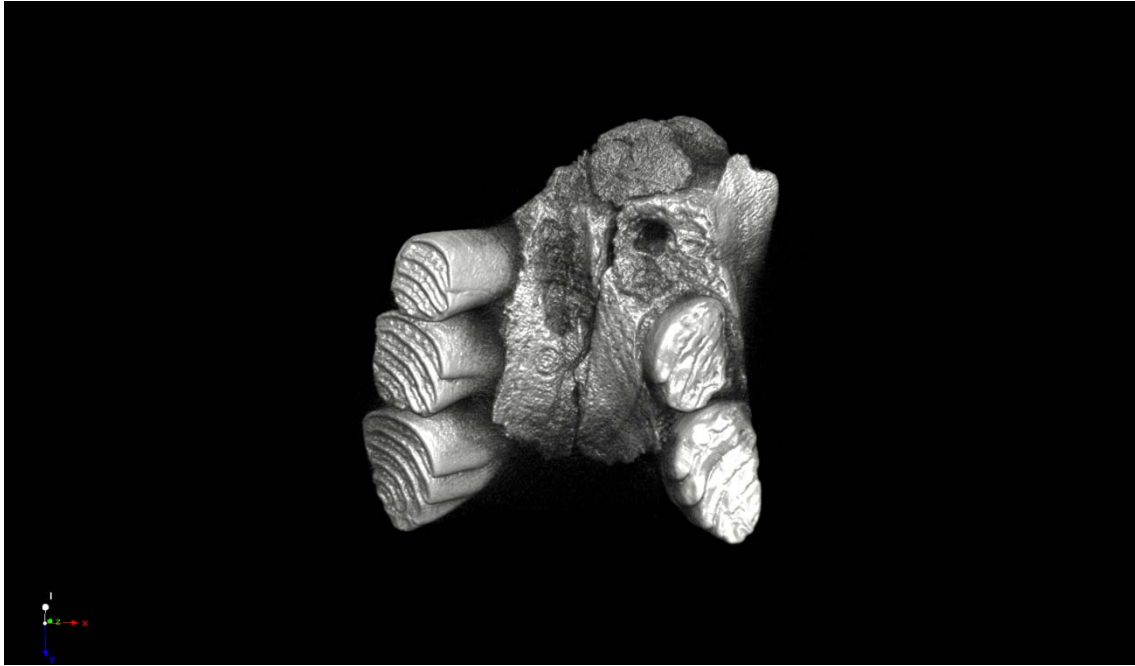


Fig. S1. Continued.



Fig. S2. Cantagalo outcrop, Juruá river. The arrow indicates where the holotype (UFAC-11) of *Potamarchus adamiaie* nov. sp. was collected.

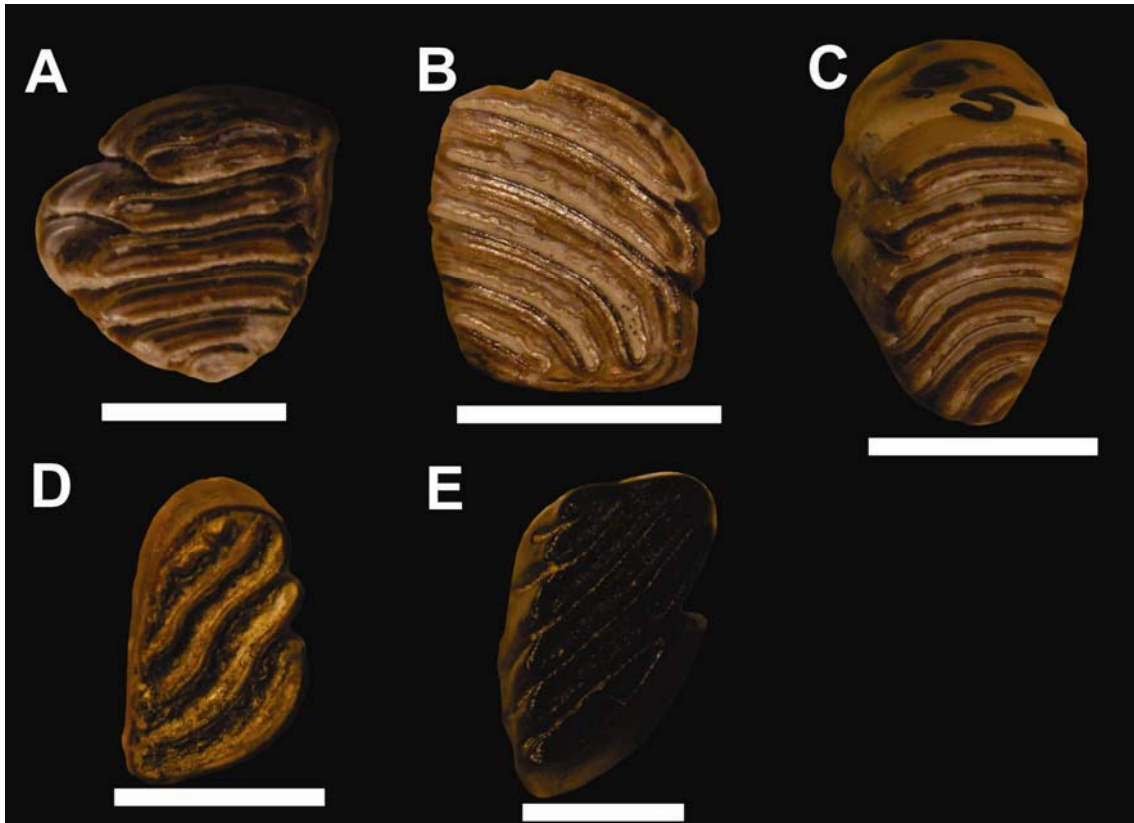


Fig. S3. Isolated Cheek teeth (occlusal view) of *Potamarchus* sp. from the Solimões Formation. **A.** UFAC 2785, left P4; **B.** UFAC 5426, right M2; **C.** UFAC 3365, left M3; **D.** UFAC 3249, right P4; **E.** UFAC 4508, right M3. Scale bars 10 mm.



Fig. S4. Tridimensional reconstruction of the maxilla of *Pseudopotamarchus villanuevai* gen. et sp. nov.

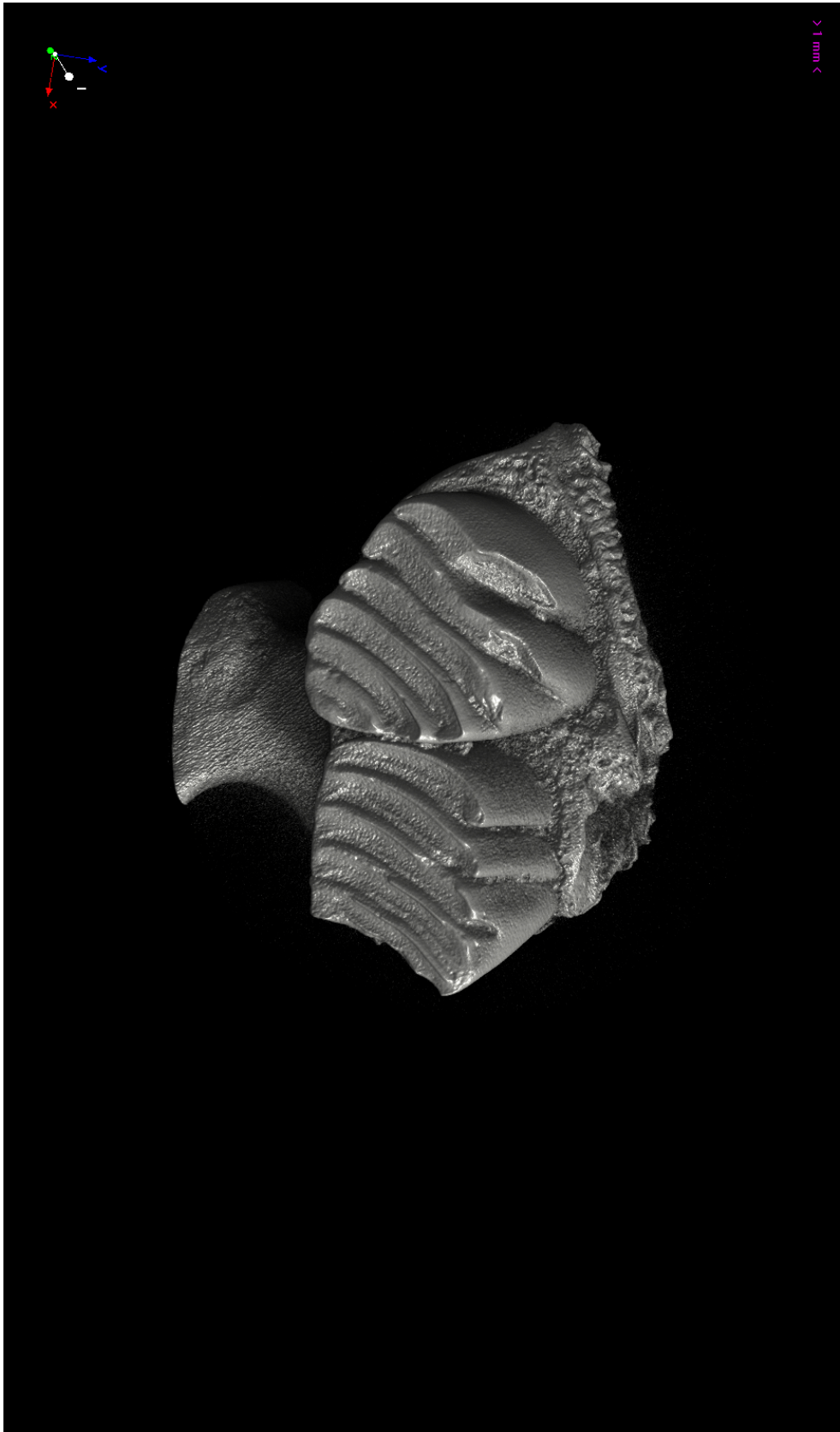


Fig. S4. Continued.

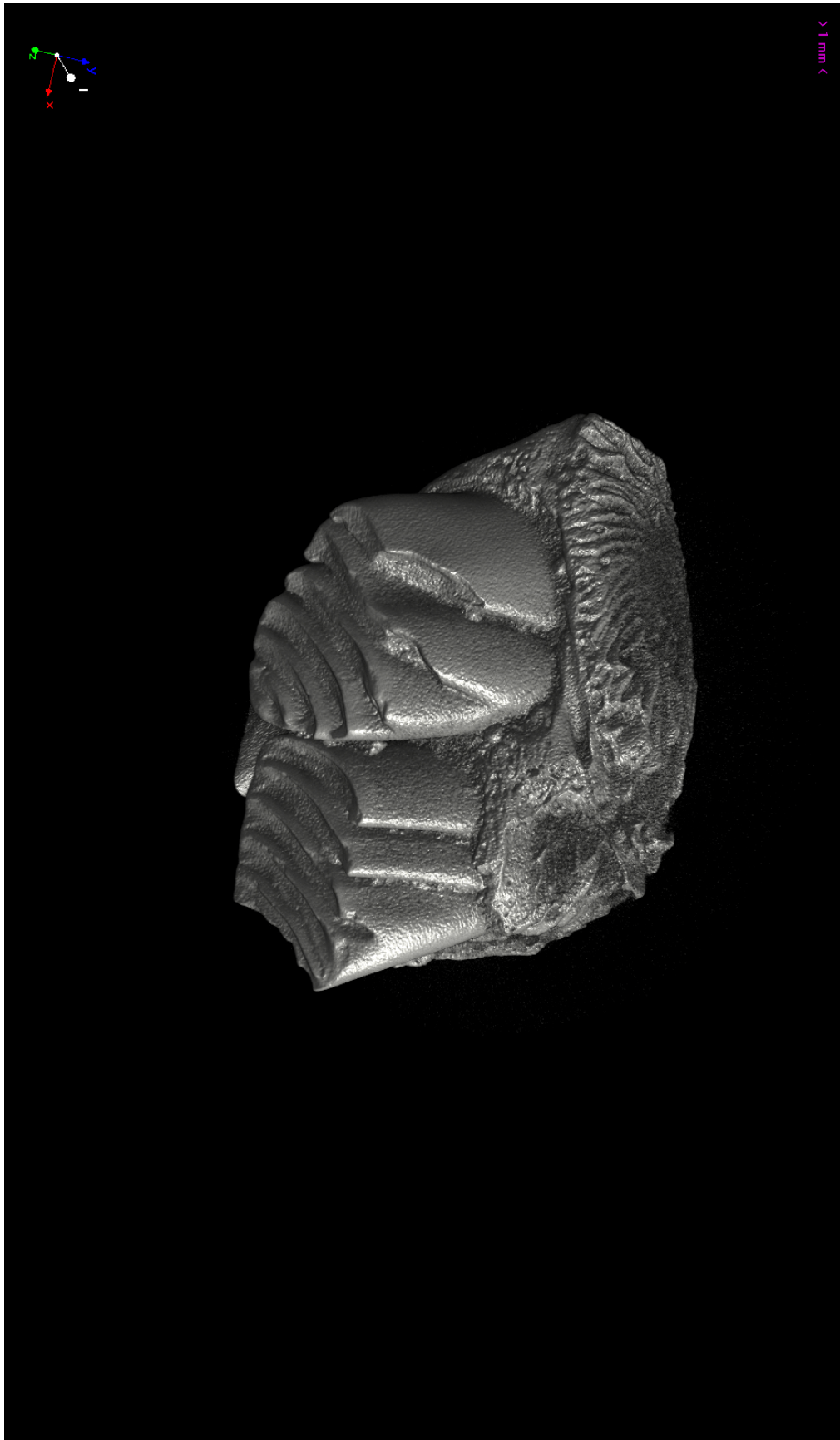


Fig. S4. Continued.

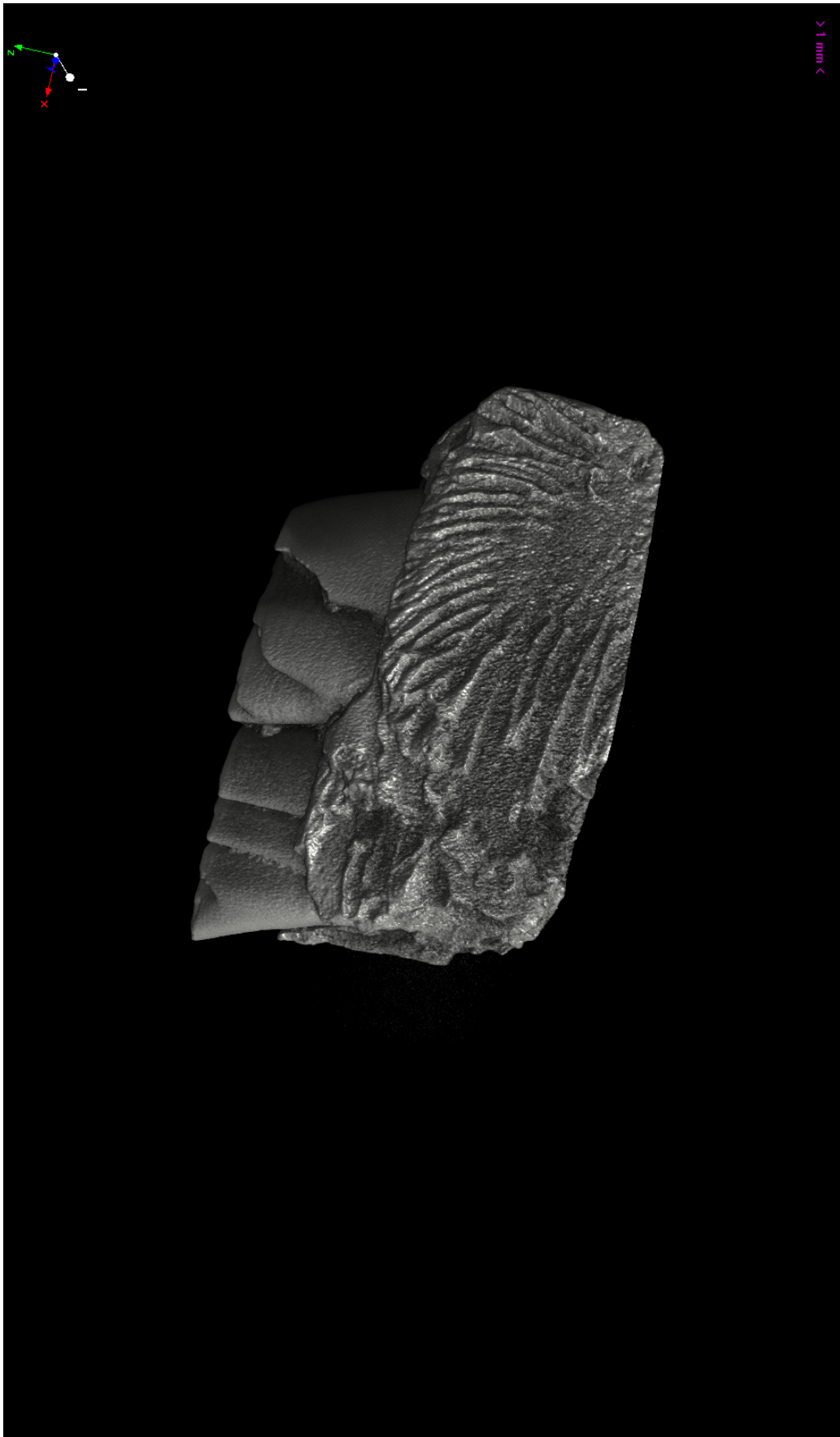


Fig. S4. Continued.

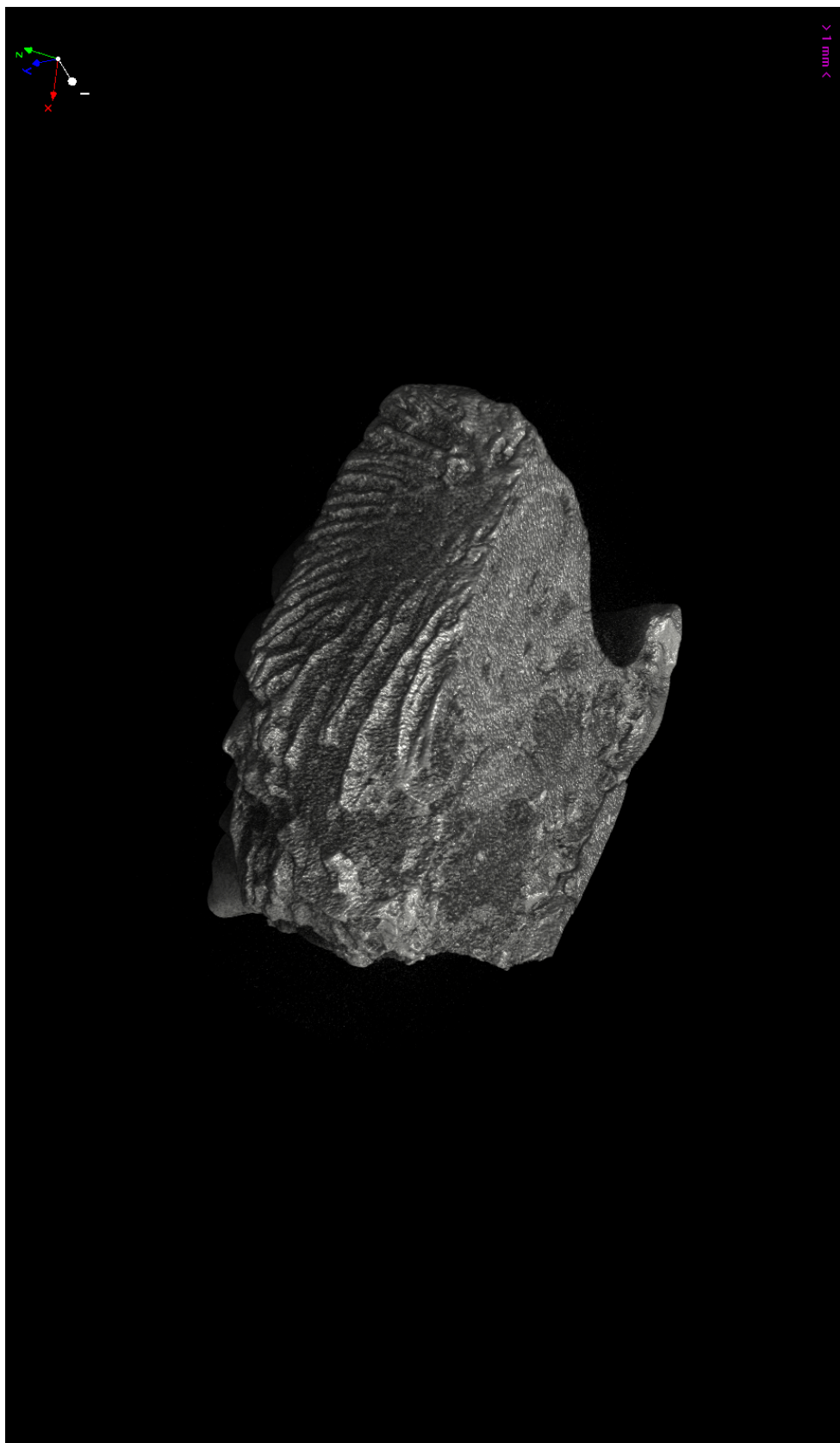


Fig. S4. Continued.



Fig. S4. Continued.

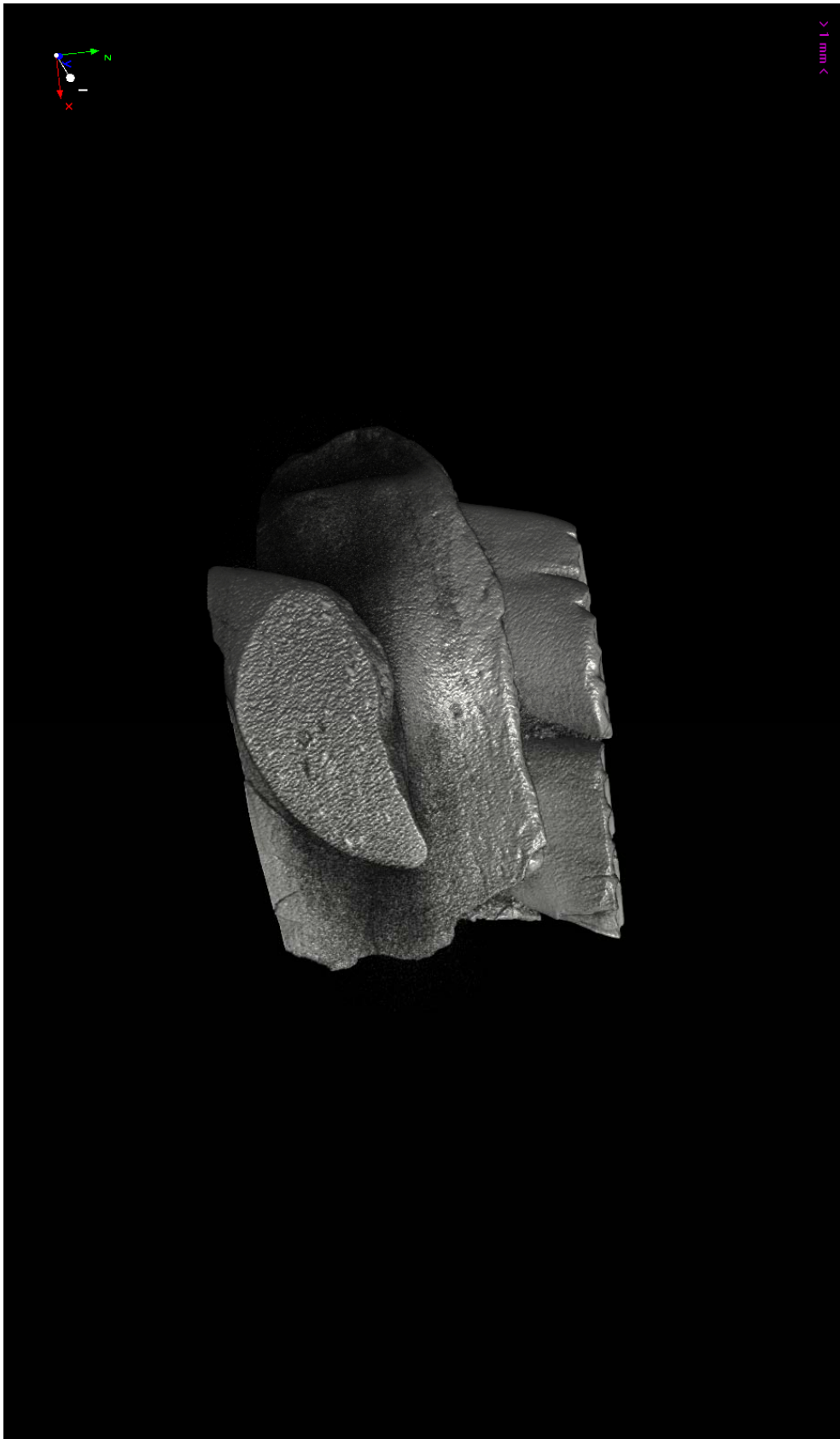


Fig. S4. Continued.

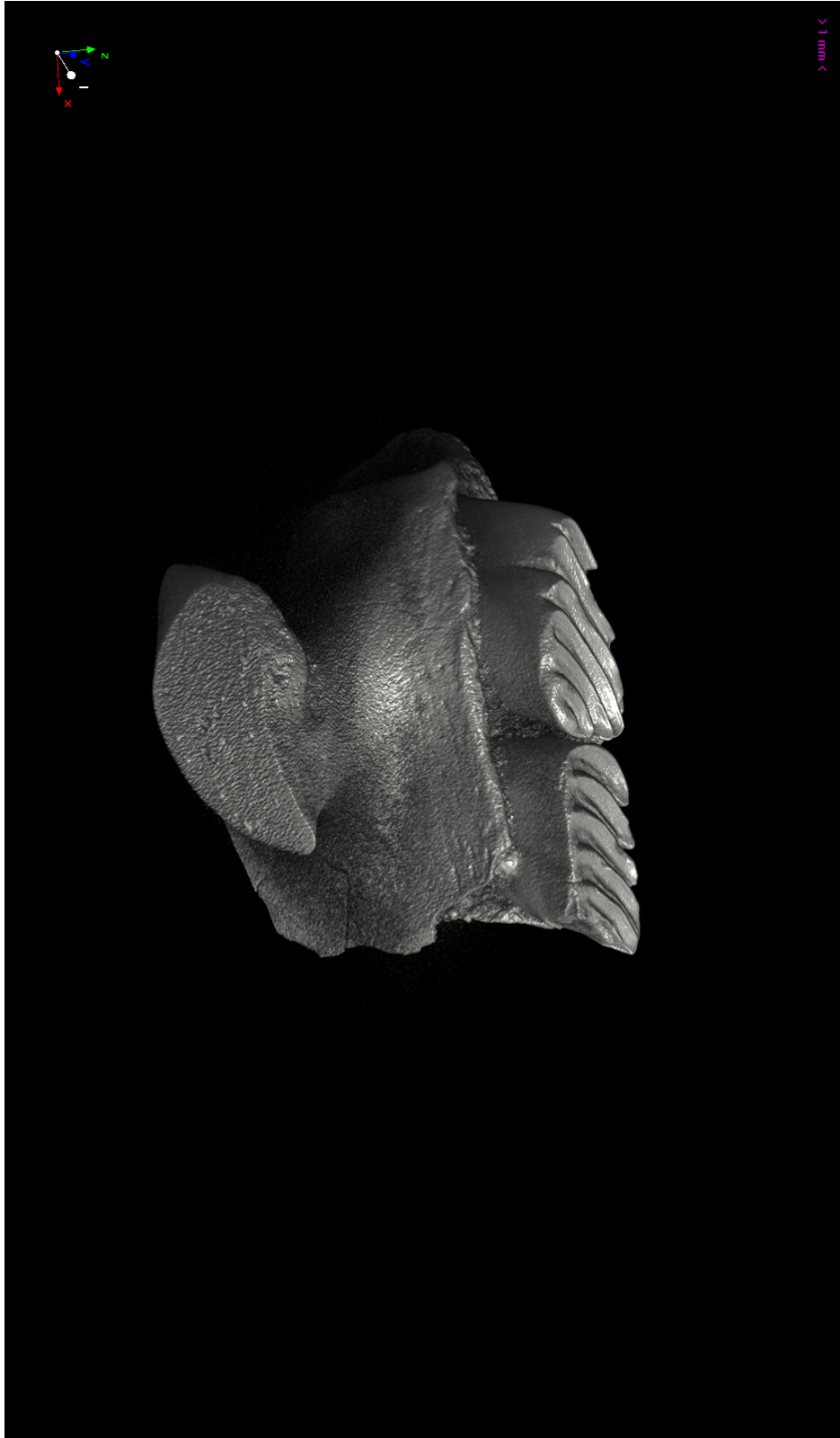


Fig. S4. Continued.



Fig. S4. Continued.