



http://app.pan.pl/SOM/app69-Cavasin_etal_SOM.pdf

SUPPLEMENTARY ONLINE MATERIAL FOR

Bone microstructure of *Priosphenodon avelasi* (Rhynchocephalia: Sphenodontia): paleobiological implications

Sol A. Cavasín, Ignacio A. Cerda, and Sebastián Apesteguía

Published in *Acta Palaeontologica Polonica* 2024 69 (1): 29-38.
<https://doi.org/10.4202/app.01071.2023>

Supplementary Online Material

Fig S1. Postcranial histology of *Priosphenodon avelasi* MPCA-Pv 308 from the Upper Cretaceous Candeleros Formation, Argentina.

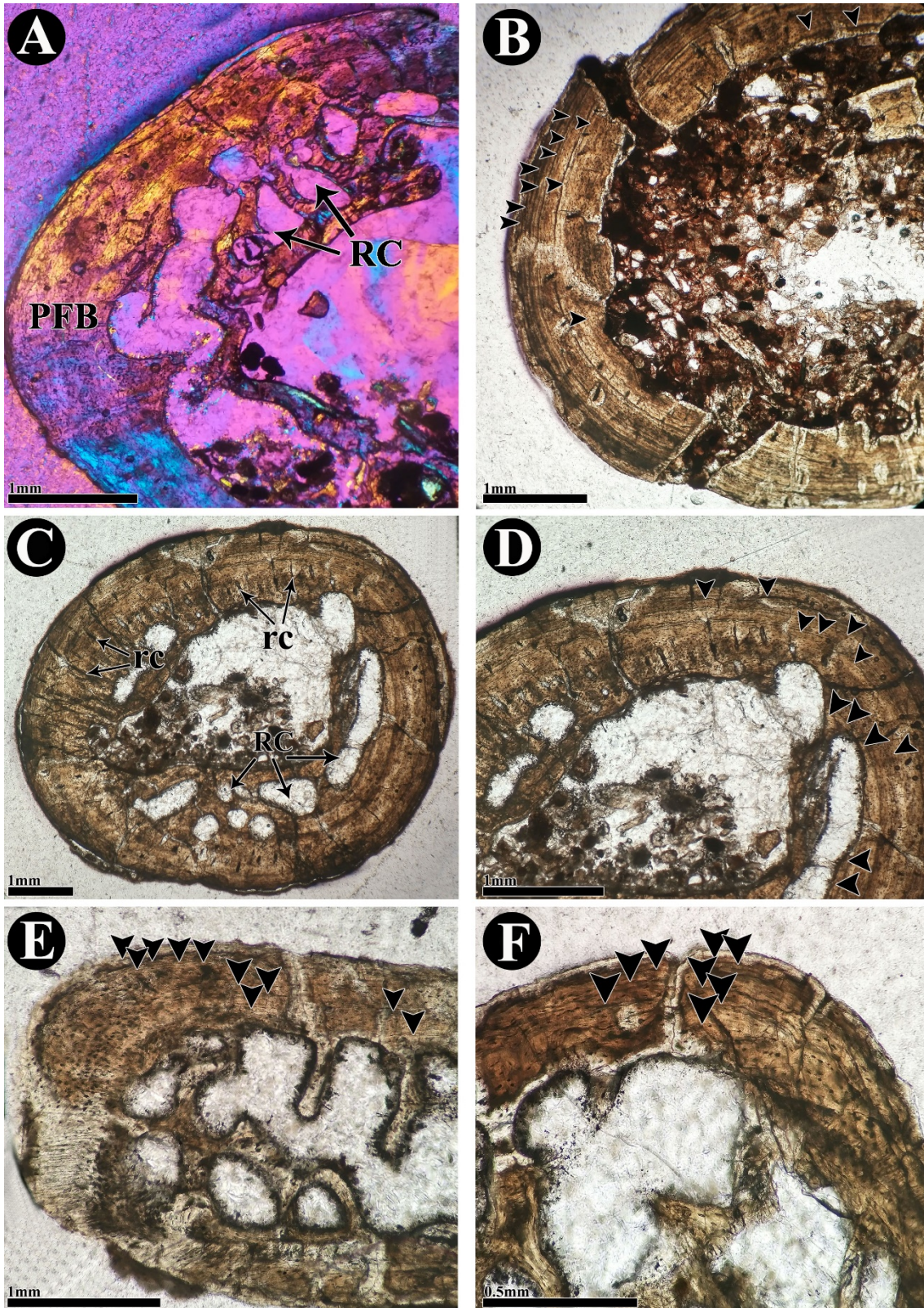


Fig S1: Postcranial histology of *Priosphenodon avelasi* MPCA-Pv 308 from the Upper Cretaceous Candeleros Formation, Argentina. Black arrowheads signal the position of LAGs. **A, B.** Bone histology of the femurs showing predominance of poorly vascularized parallel fibered bone (A) and distribution of LAGs (B). **C, D.** Bone histology of the tibia showing the distribution of radial canals and resorption cavities (C), and LAGs (D). **E, F.** Distribution of LAGs in phalanges A (E) and B (F). Abbreviations: **PFB:** parallel fibered bone; **RC:** resorption cavities; **rc:** radial canals.