



[http://app.pan.pl/SOM/app64-Hrabovsky\\_SOM.pdf](http://app.pan.pl/SOM/app64-Hrabovsky_SOM.pdf)

SUPPLEMENTARY ONLINE MATERIAL FOR

**Reproductive phases of Miocene algae from central  
Paratethys and their bearing on systematics**

Juraj Hrabovský

Published in *Acta Palaeontologica Polonica* 2019 64 (2): 417-439.  
<https://doi.org/10.4202/app.00579.2018>

**Supplementary Online Material**

**Fig. S1.** *Hydrolithon* sp. 1, details of solitary trichocytes in the thallus.

**Fig. S2.** *Lithoporella minus* Johnson, 1964 from Early Serravallian of Devínska Kobyla and Maksymivka; overview of the pore canal anatomy.

**Fig. S3.** *Lithoporella minus* Johnson, 1964 from Early Serravallian, Maksymivka, Early Langhian, Lopadea Veche and Late Serravallian, Devínska Kobyla; overview of the pore canal anatomy.

Fig. S1. *Hydrolithon* sp. 1 from Serravallian, Maksymivka; male gametophyte, TS 21510953, details of solitary trichocytes in the thallus (arrows).

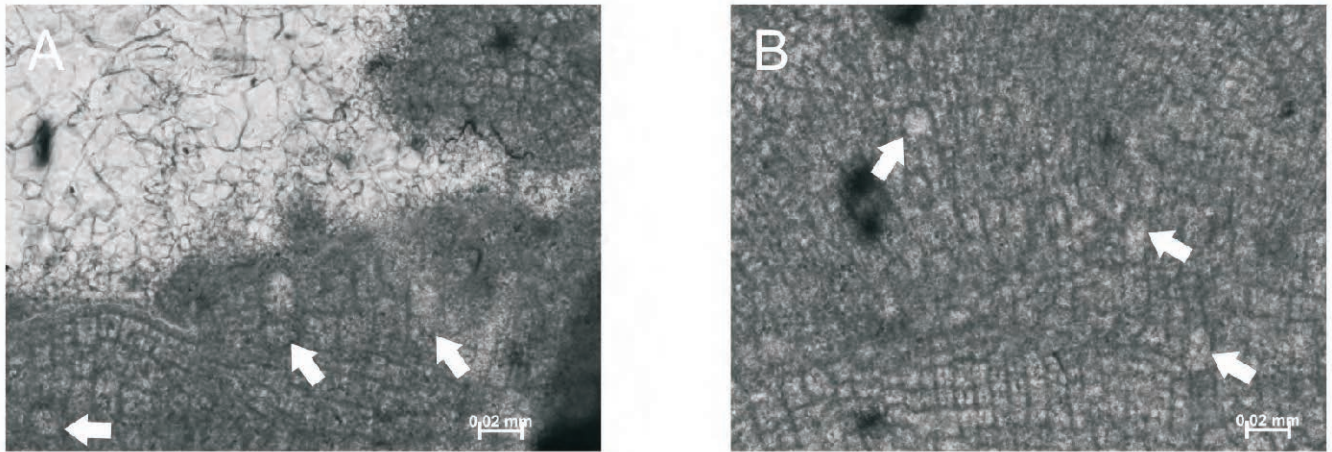


Fig. S2. *Lithoporella minus* Johnson, 1964 from Early Serravallian, (A, B) Devínska Kobyla, TS K3b and K3d, respectively; (C) Maksymivka, TS 21510253; overview of the pore canal anatomy.

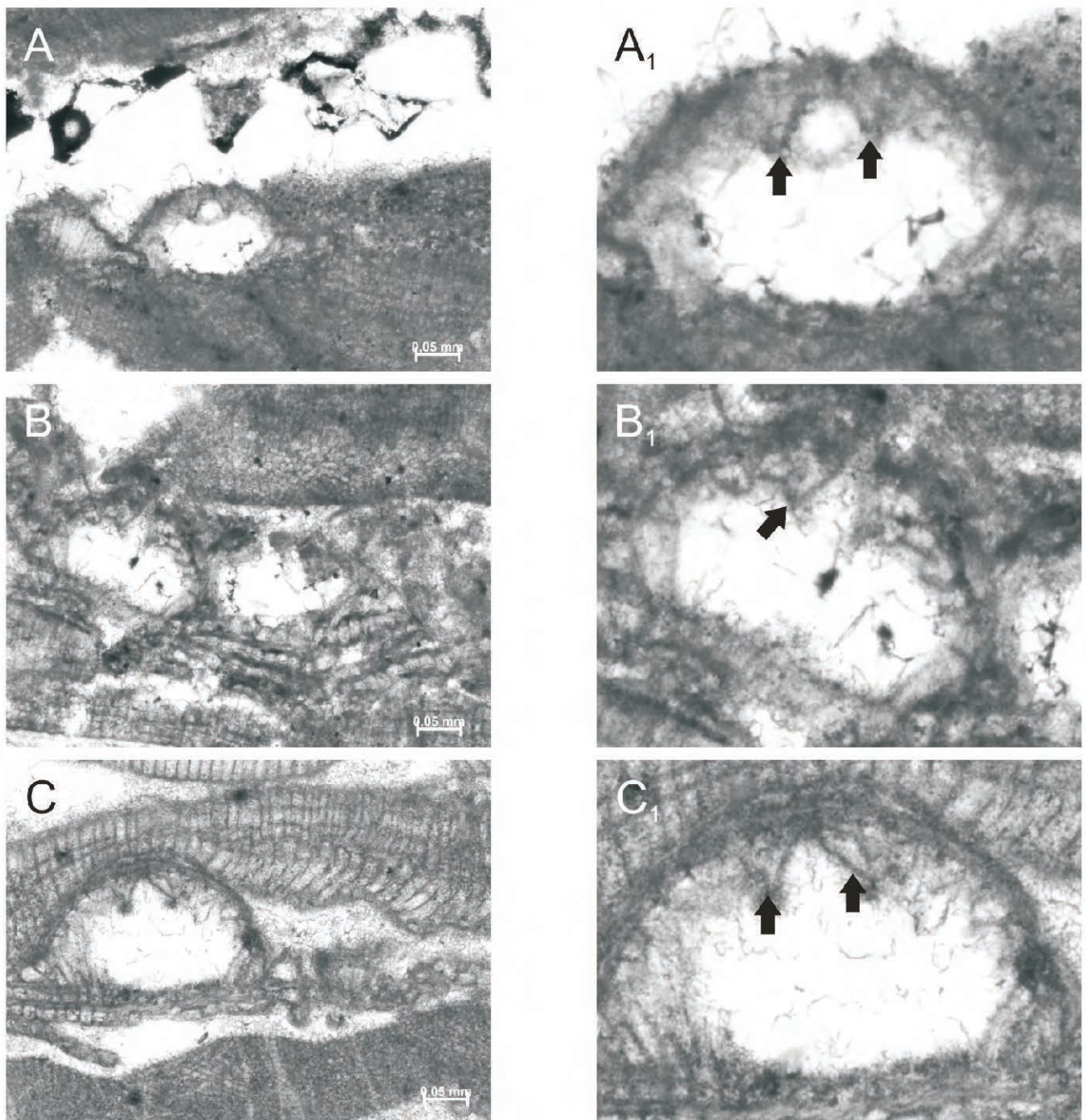


Fig. S3. *Lithoporella minus* Johnson, 1964 from (A) Early Serravallian, Maksymivka, TS 21510253, (B) Early Langhian, Lopadea Veche, TS 184911151, (C) Late Serravallian, Devínska Kobyla, TS 7114161; overview of the pore canal anatomy.

