



http://app.pan.pl/SOM/app58-MacDougall_etal_SOM.pdf

SUPPLEMENTARY ONLINE MATERIAL FOR

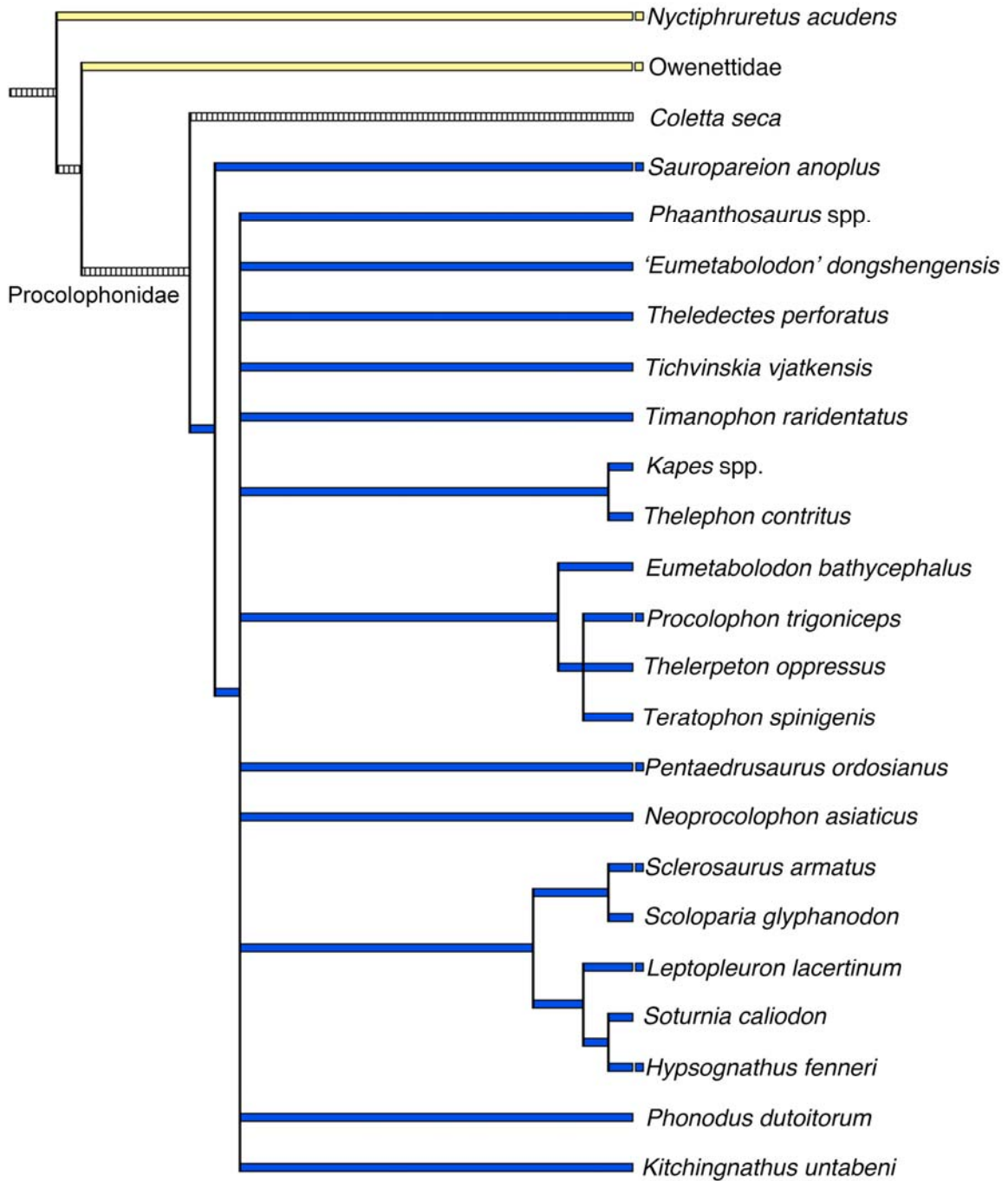
The postcranial skeleton of the Early Triassic parareptile *Sauropareion anoplus*, with a discussion of possible life history

Mark J. MacDougall, Sean P. Modesto, and Jennifer Botha-Brink

Published in *Acta Palaeontologica Polonica* 2013 58 (4): 737-749.
<http://dx.doi.org/10.4202/app.2011.0099>

SOM

Fig 1. Evolution of burrowing behaviour in Procolophonidae based on the strict consensus tree shown in Figure 8. Modified screenshot of a tree generated in MacClade (Maddison and Maddison, 2003). Blue and yellow bars indicate presence and absence of burrowing behavior, respectively, for ancestors and terminal taxa. Hatched bars indicate ancestors and terminal taxa that are equivocal. The tree indicates that burrowing appeared early in the evolution of the Procolophonidae. Burrowing behaviour was mapped onto taxa based on anatomical characteristics associated with burrowing that were preserved in the taxa.



Reference

Maddison W. P. and Maddison, D. R. 2003. *MacClade: Analysis of phylogeny and character evolution. Version 4.06*. Sinauer Associates, Sunderland, Massachusetts.