



[http://app.pan.pl/SOM/app63-Oliveira\\_etal\\_SOM.pdf](http://app.pan.pl/SOM/app63-Oliveira_etal_SOM.pdf)

## SUPPLEMENTARY ONLINE MATERIAL FOR

### **Tanystropheid archosauromorphs in the Lower Triassic of Gondwana**

Tiane Macedo De Oliveira, Daniel Oliveira, Cesar L. Schultz,  
Leonardo Kerber, and Felipe L. Pinheiro

Published in *Acta Palaeontologica Polonica* 2018 63 (4): 713-723.

<https://doi.org/10.4202/app.00489.2018>

#### **Supplementary Online Material**

**SOM 1.** Taxa excluded a priori from the analysis

**SOM 2.** 3D reconstructions available at

[http://app.pan.pl/SOM/app63-Oliveira\\_etal\\_SOM/SOM2\\_UFRGS-PV\\_492-T.pdf](http://app.pan.pl/SOM/app63-Oliveira_etal_SOM/SOM2_UFRGS-PV_492-T.pdf)

[http://app.pan.pl/SOM/app63-Oliveira\\_etal\\_SOM/SOM2\\_UFRGS-PV\\_6471.pdf](http://app.pan.pl/SOM/app63-Oliveira_etal_SOM/SOM2_UFRGS-PV_6471.pdf)

[http://app.pan.pl/SOM/app63-Oliveira\\_etal\\_SOM/SOM2\\_UNIPAMPA\\_733.pdf](http://app.pan.pl/SOM/app63-Oliveira_etal_SOM/SOM2_UNIPAMPA_733.pdf)

**SOM 3.** Results of the phylogenetic analysis

Fig. 1. Result of the phylogenetic analysis including specimen UNIPAMPA 733.

Fig. 2. Result of the phylogenetic analysis including specimen UFRGS-PV-492-T.

**SOM 4.** List of sinapomorphies

## **SOM 1.** Taxa excluded a priori from the analysis

The analyses conducted here are based in the reduced matrix proposed by Sengupta et al. (2017), which is a modification of Ezcurra (2016) database. We excluded 23 terminals *a priori* from the analyses. Excluded terminals are OTUs considered as problematic both by Ezcurra (2016) and Sengupta et al. (2017): *Eorasaurus olsoni*, *Prolacertoides jimusarensis*, *Kadimakara australiensis* holotype, *Archosaurus rossicus*, “*Proterosuchus fergusi*” holotype, “*Chasmatosaurus ultimus*”, *Ankistrodon indicus*, *Exilisuchus tubercularis*, *Blomosuchus georgii*, *Vonhuenia friedrichi*, *Chasmatosuchus rossicus* combined, *Chasmatosuchus magnus*, *Gamosaurus lozovskii*, *Chasmatosuchus magnus* combined, *Chasmatosuchus vjushkovi*, SAM P41754 Long Reef, *Kalisuchus rewanensis*, *Garjania madiba* holotype, *Shansisuchus kuyeheensis*, “*Dongusia colorata*”, *Uralosaurus magnus* holotype, and *Uralosaurus magnus* combined.

SOM. 3

Fig. 1. Result of the phylogenetic analysis including specimen UNIPAMPA 733.

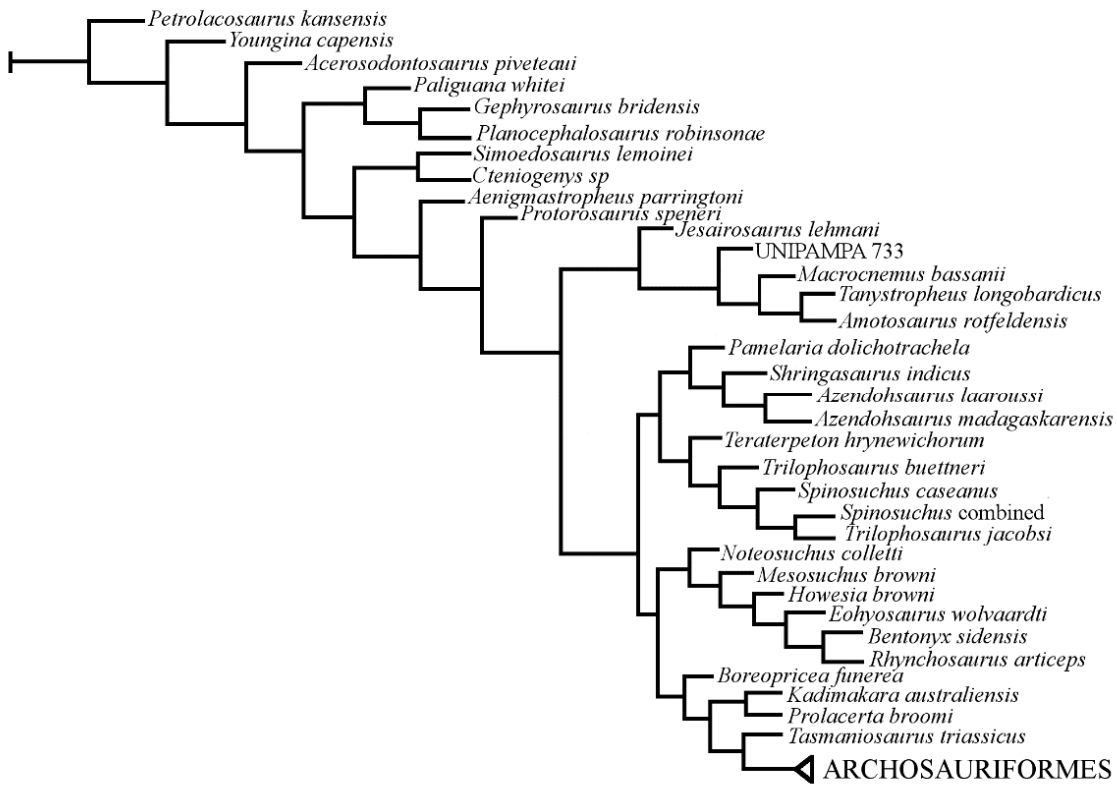
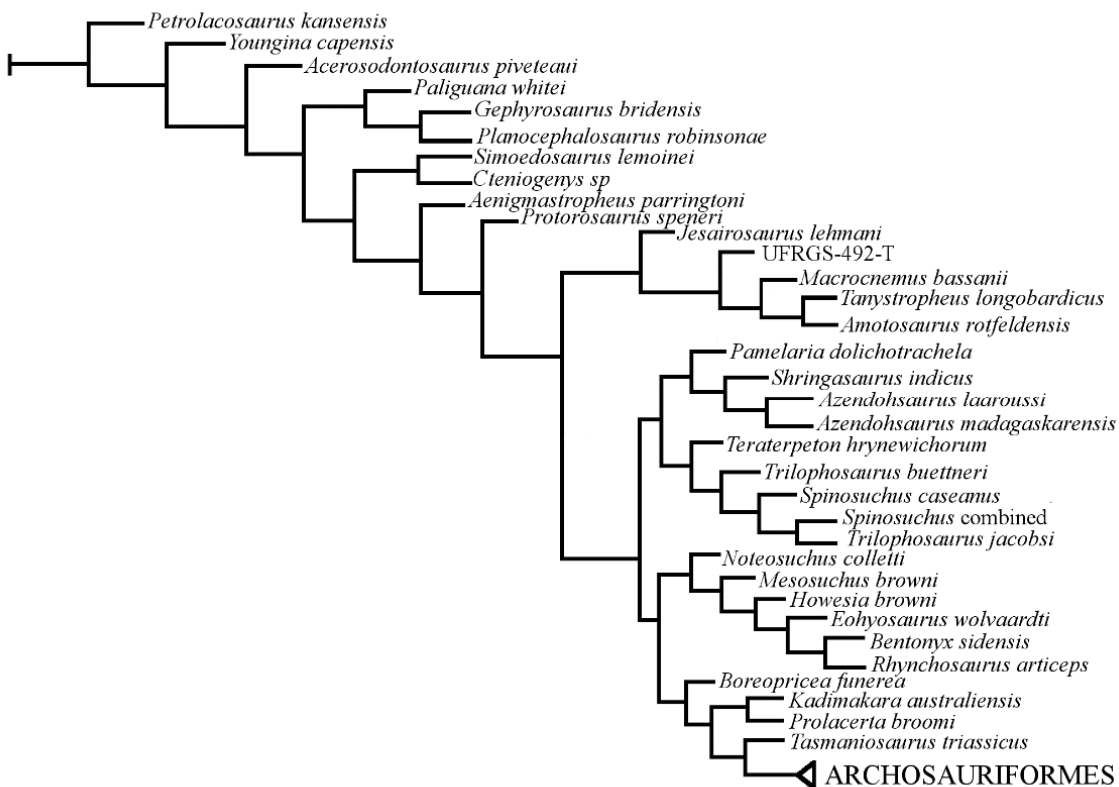


Fig. 2. Result of the phylogenetic analysis including specimen UFRGS-PV-492-T.



**SOM 4.** List of sinapomorphies of the clade composed by the specimens UNIPAMPA 733, UFRGS-492-T, *Jesairosaurus lehmani* and Tanystropheidae recovered in this analysis:

42 : 2->1  
121 : 0->1  
131 : 0->1  
160 : 0->1  
197 : 0->1  
202 : 1->2  
340 : 0->1  
407 : 0->1  
425 : 1->0  
446 : 2->1  
558 : 0->1  
564 : 0->1  
565 : 0->1