



[http://app.pan.pl/SOM/app64-Raffi\\_etal\\_SOM.pdf](http://app.pan.pl/SOM/app64-Raffi_etal_SOM.pdf)

## SUPPLEMENTARY ONLINE MATERIAL FOR

### **The gaudryceratid ammonoids from the Upper Cretaceous of the James Ross Basin, Antarctica**

María E. Raffi, Eduardo B. Olivero, and Florencia N. Milanese

Published in *Acta Palaeontologica Polonica* 2019 64 (X): xxx-xxx.  
<https://doi.org/10.4202/app.00560.2018>

#### **Supplementary Online Material**

Fig. 1. Plot of whorl breadth /whorl height against diameter of *Gaudryceras submurdochi* Raffi and Olivero sp. nov. from Antarctica.

Fig. 2. Plot of umbilical diameter against diameter of *Gaudryceras submurdochi* Raffi and Olivero sp. nov. from Antarctica.

Fig. 3. Plot of whorl breadth /whorl height against diameter of *Anagaudryceras* cf. *A. politissimum*.

Fig. 4. A huge specimen of *Anagaudryceras seymouriense*.

Fig. 5. Plot of whorl breadth /whorl height against diameter of dimorphic pair of *Anagaudryceras calabozoi* Raffi and Olivero sp. nov.

Fig. 6. Plot of diameter against umbilical diameter of dimorphic pair of *Anagaudryceras calabozoi* Raffi and Olivero sp. nov.

Fig. 7. A plot of whorl breadth /whorl height against diameter of Antarctic species of *Anagaudryceras*.

Fig. 1. Plot of whorl breadth /whorl height against diameter of *Gaudryceras submurdochi* Raffi and Olivero sp. nov. from Antarctica.

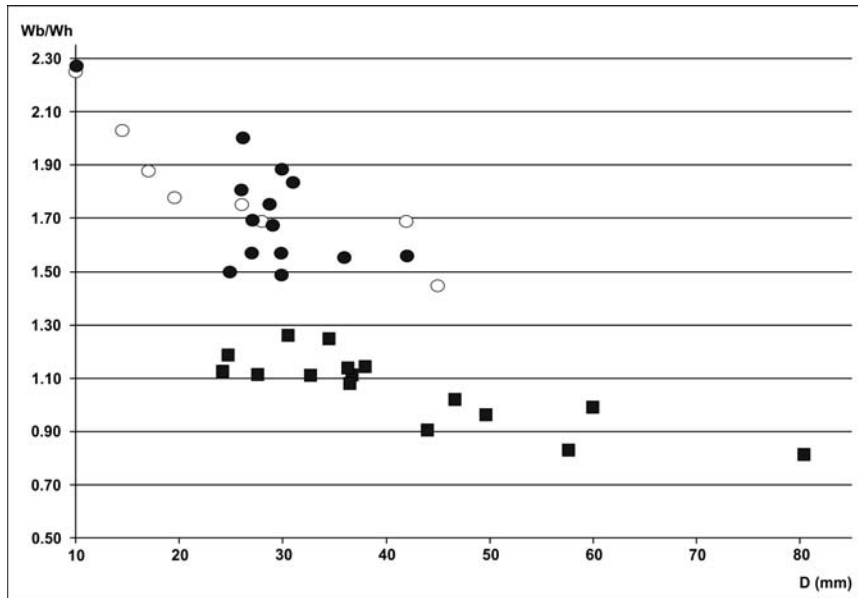


Fig. 2. Plot of umbilical diameter against diameter of *Gaudryceras submurdochi* Raffi and Olivero sp. nov. from Antarctica.

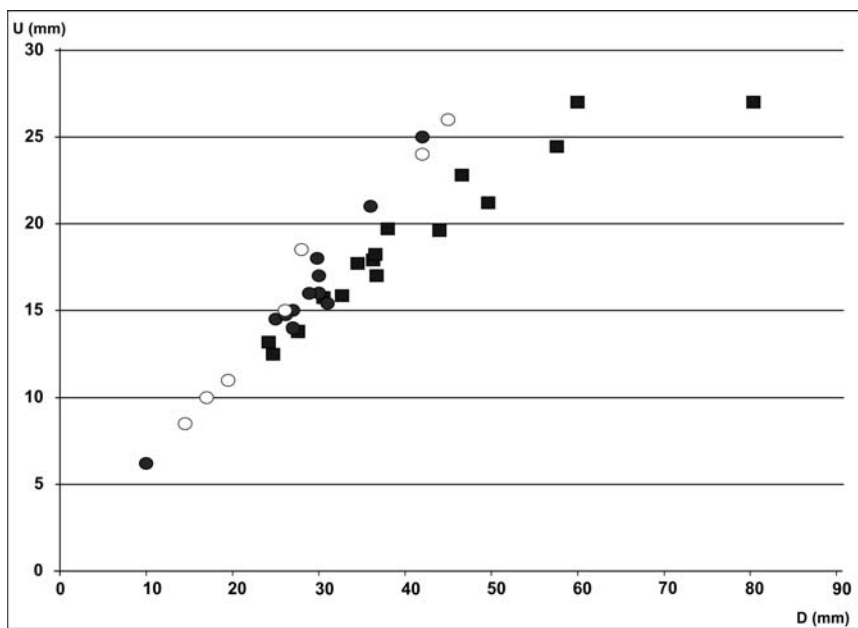


Fig. 3. Plot of whorl breadth /whorl height against diameter of *Anagaudryceras* cf. *A. politissimum*.

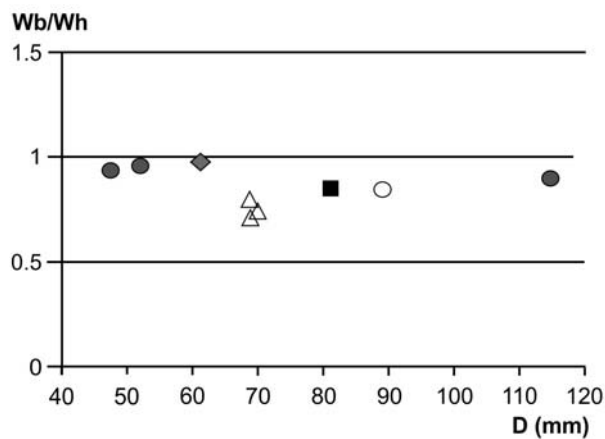


Fig. 4. A huge specimen of *Anagaudryceras seymouriense*.

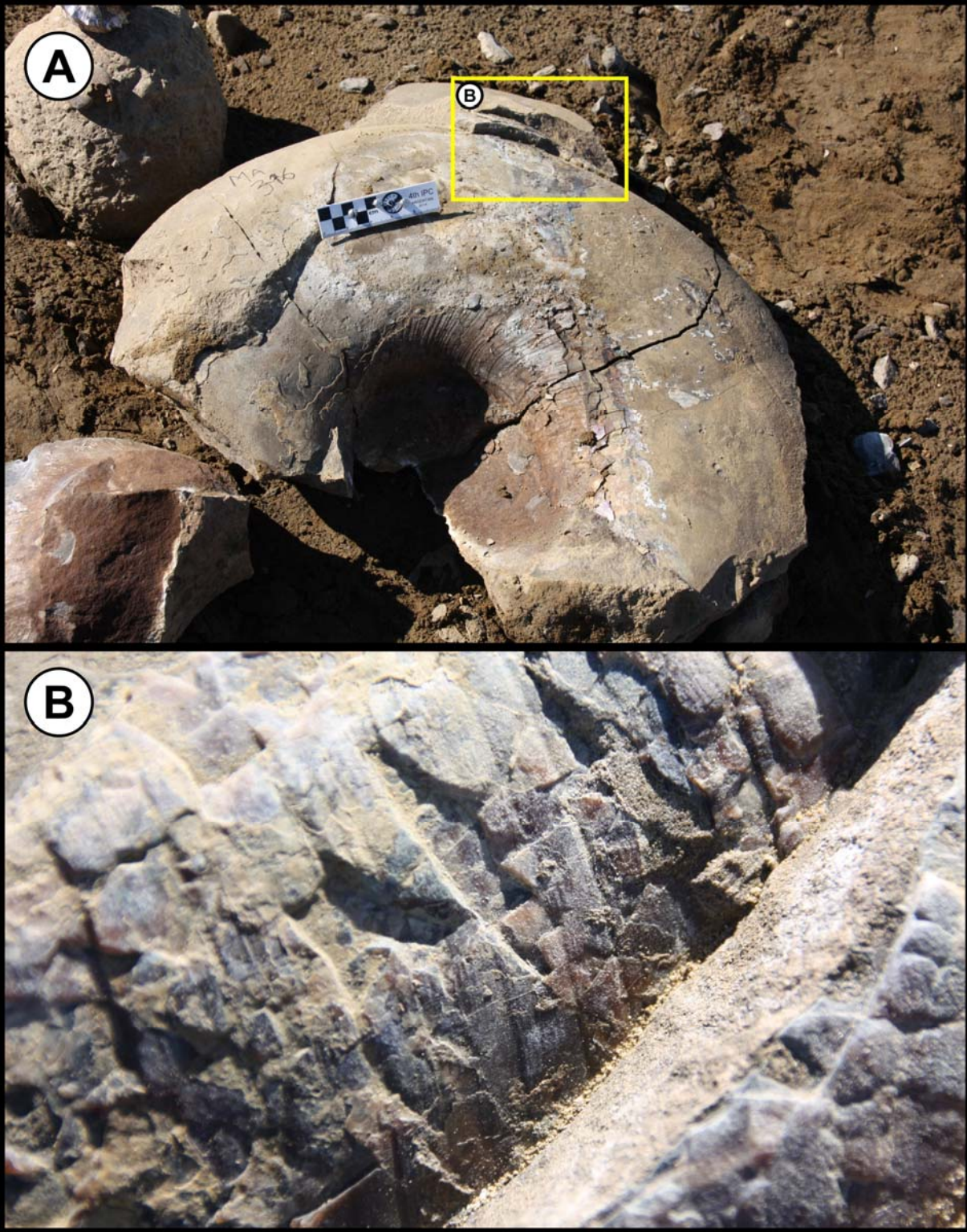


Fig. 5. Plot of whorl breadth /whorl height against diameter of dimorphic pair of *Anagaudryceras calabozoi* Raffi and Olivero sp. nov.

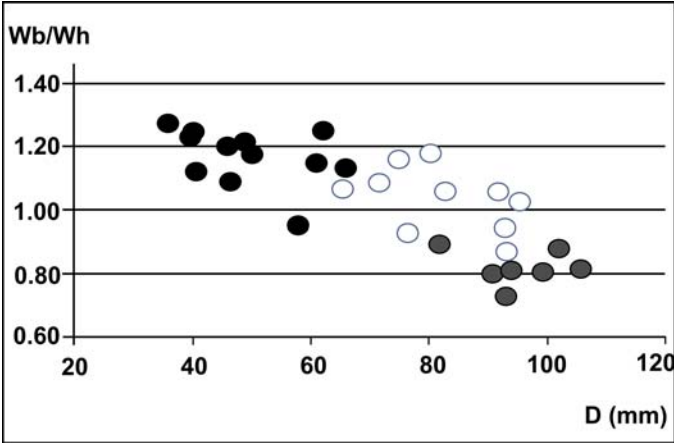


Fig. 6. Plot of diameter against umbilical diameter of dimorphic pair of *Anagaudryceras calabozoi* Raffi and Olivero sp. nov.

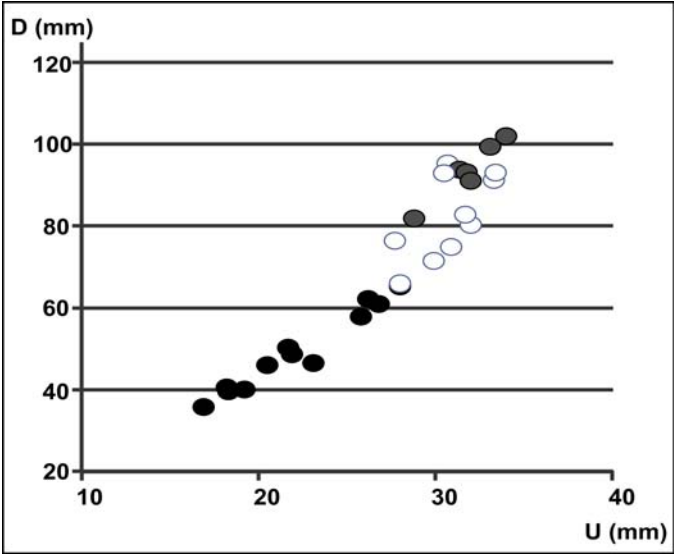


Fig. 7. A plot of whorl breadth /whorl height against diameter of Antarctic species of *Anagaudryceras*.

