



http://app.pan.pl/SOM/app66-Benoit_etal_SOM.pdf

SUPPLEMENTARY ONLINE MATERIAL FOR

**Palaeoneurology and palaeobiology of the dinocephalian *Anteosaurus*
*magnificus***

Julien Benoit, Ashley Kruger, Sifelani Jirah, Vincent Fernandez,
and Bruce S. Rubidge

Published in *Acta Palaeontologica Polonica* 2021 66 (1): 29 - 39.
<https://doi.org/10.4202/app.00800.2020>

Supplementary Online Material

SOM 1. Digital 3D models of the maxillary canal, bony labyrinth, endocranial cast, hindbrain, and skull of *Anteosaurus magnificus* (BP/1/7074) available at:

http://app.pan.pl/SOM/app66-Benoit_etal_SOM/Endocast.ply

http://app.pan.pl/SOM/app66-Benoit_etal_SOM/Floccular_fossa.ply

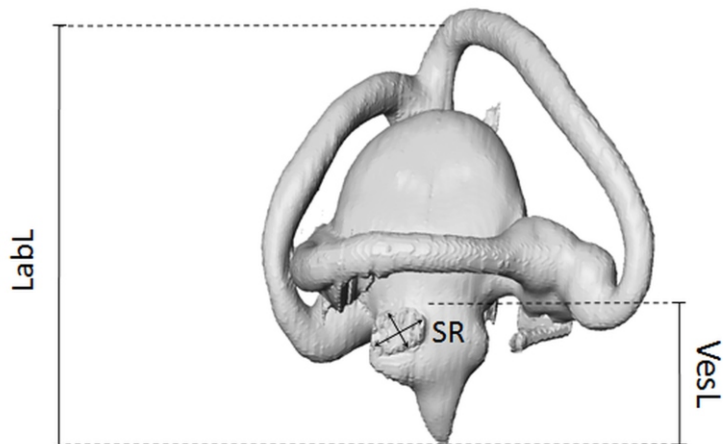
http://app.pan.pl/SOM/app66-Benoit_etal_SOM/Labyrinth.ply

http://app.pan.pl/SOM/app66-Benoit_etal_SOM/Maxillary_canal.ply

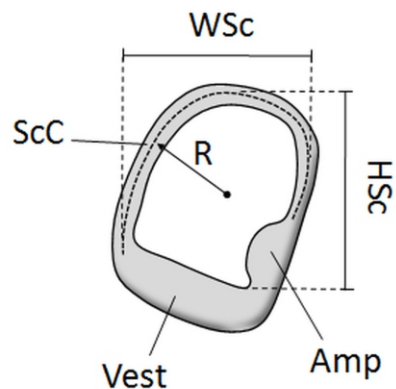
http://app.pan.pl/SOM/app66-Benoit_etal_SOM/Skull.ply

SOM 2. Measurements (after Benoit et al. 2017b).

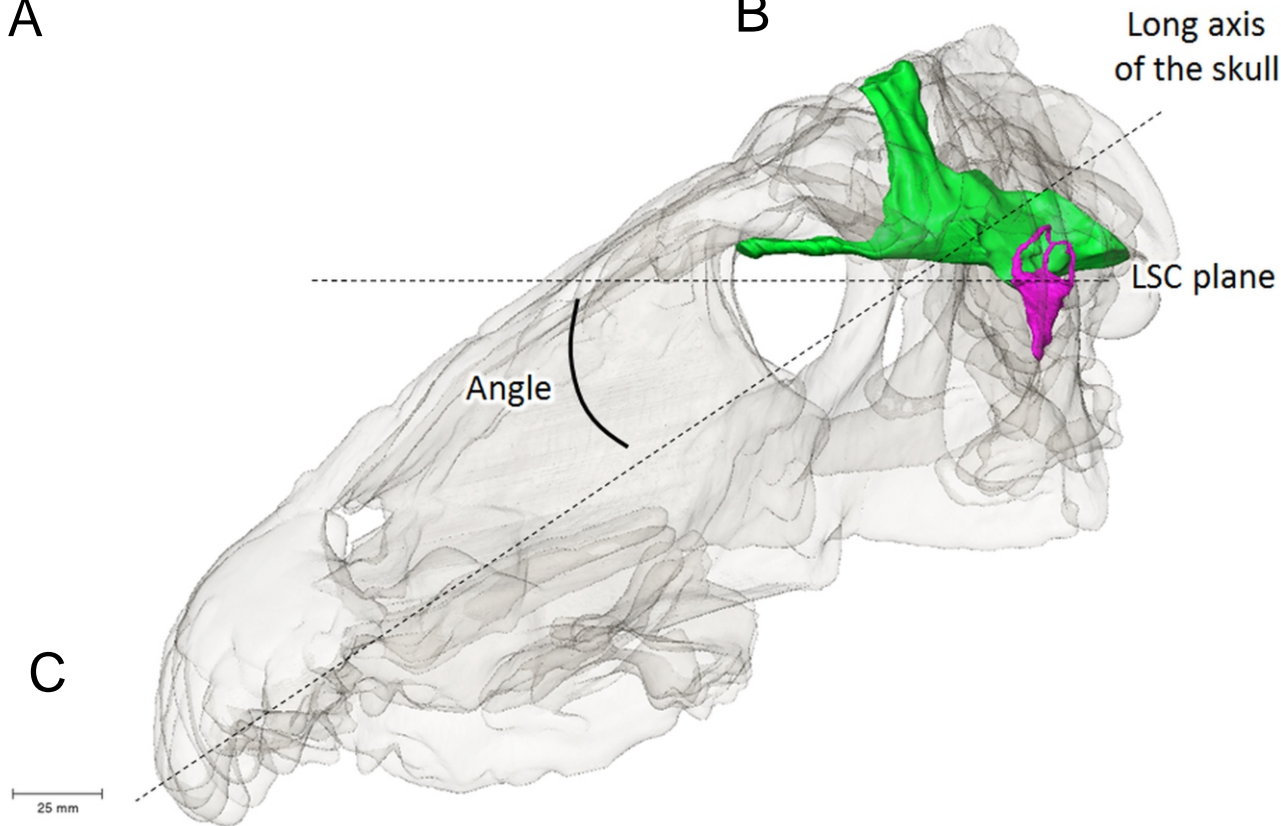
SOM 2. Measurements (after Benoit et al. 2017b). A, length of the bony labyrinth and vestibule illustrated on the bony labyrinth of an iguana. B, measurements taken on the semicircular canals illustrated on an isolated semicircular canal. C, measurement of the angle between the skull and lateral semicircular canal. Abbreviations: Amp, ampulla; Angle, angle between the skull and the plane of the lateral semicircular canal; HSc, semicircular canal height; LabL, length of the bony labyrinth; LSC, lateral semicircular canal; R, radius of curvature of the semicircular canal; ScC, semicircular canal; SR, stapedial ratio; VesL, length of the vestibule; Vest, vestibule; WSc, semicircular canal width.



A



B



C