



http://app.pan.pl/SOM/app70-Pratas_etal_SOM.pdf

SUPPLEMENTARY ONLINE MATERIAL FOR

A new Ichthyosaur from the Lower Jurassic of Portugal (Iberian Peninsula)

João Pratas E Sousa, Isabel Morais Roldão, Maria Rios-Ibanez,

and Eduardo Puertólas-Pascual

Published in *Acta Palaeontologica Polonica* 2025 70 (1): 179–192.

<https://doi.org/10.4202/app.01199.2024>

Supplementary Online Material

SOM 1. Data matrix Maxwell and Cortés 2020

available at http://app.pan.pl/SOM/app70-Pratas_etal_SOM/SOM_1.tnt

SOM 2. Data matrix Laboury et al. 2022

available at http://app.pan.pl/SOM/app70-Pratas_etal_SOM/SOM_2.tnt

SOM 3. Strict consensus of 13 trees

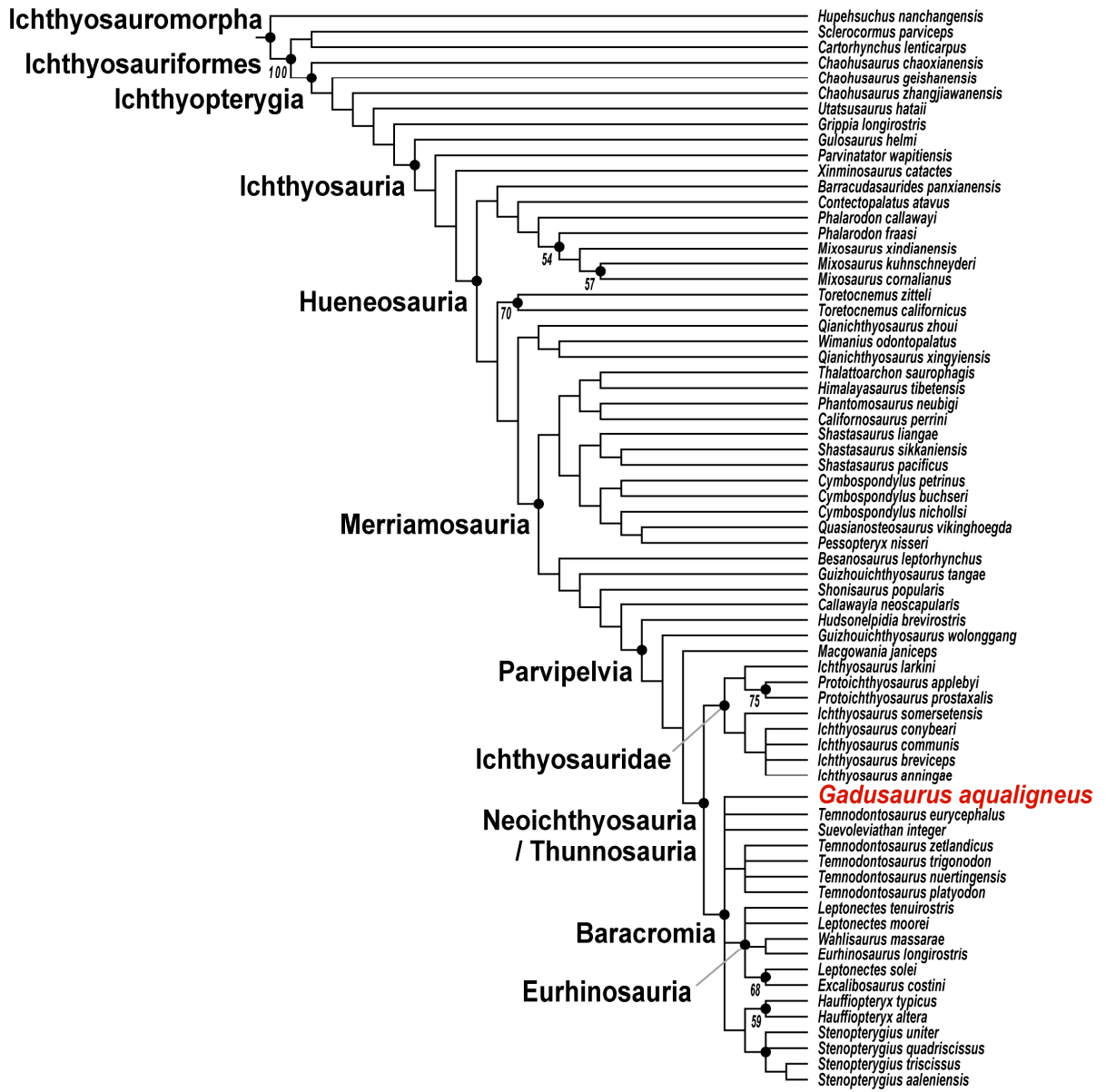
SOM 4. Strict consensus of 8 trees

Laboury, A., Bennion, R. F., Thuy, B., Weis, R., and Fischer, V. (2022). Anatomy and phylogenetic relationships of *Temnodontosaurus zetlandicus* (Reptilia: Ichthyosauria). *Zoological Journal of the Linnean Society*, 195(1), 172-194.

Maxwell, E. E., and Cortés, D. (2020). A revision of the Early Jurassic ichthyosaur *Hauffiopteryx* (Reptilia: Ichthyosauria), and description of a new species from southwestern Germany. *Palaeontologia Electronica*, 23(2), 1-43.

SOM 3

Strict consensus of 13 trees, 1639 evolutionary steps (42 taxa excluded)



SOM 4

Strict consensus of 8 trees, best score 61.72684 (2 taxa excluded). Extended implied weighting (k = 12)

